



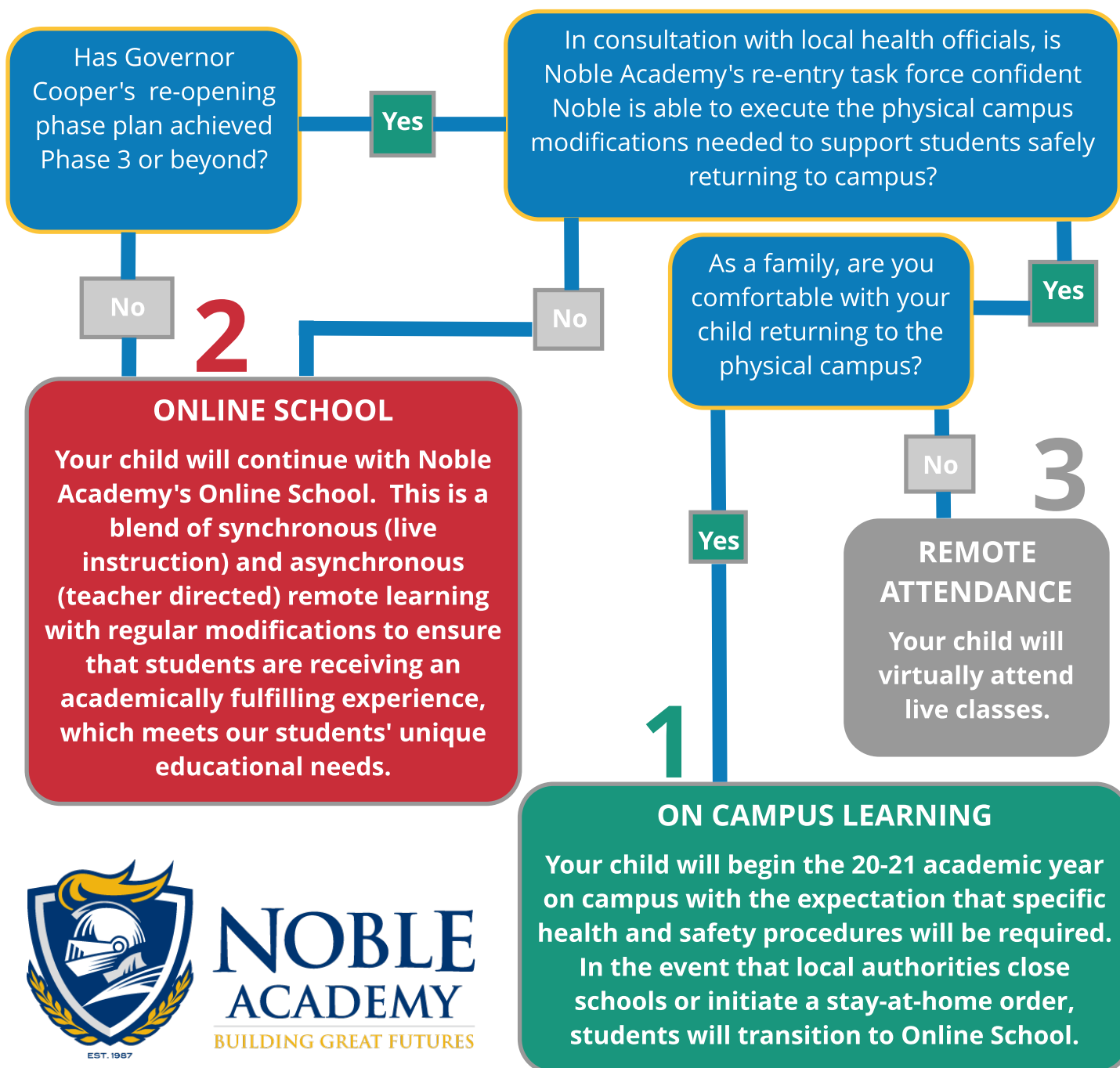
NOBLE
ACADEMY
BUILDING GREAT FUTURES

Re-Entry Plan

2020-2021

Re-Entry Planning

Noble Academy has established a re-entry task force which is working diligently to develop a re-entry strategy that allows for flexibility, transparency and prioritizes the health and safety of our community. Noble is currently preparing the physical campus to support students in the fall of 2020. However the administration is also aware that some students and teachers may not be able to physically come to school daily. We also know there may be moments in the year where our local, regional or national officials may recommend or require our campus to be closed for a variety of reasons.



**NOBLE
ACADEMY**
BUILDING GREAT FUTURES

ON CAMPUS LEARNING

Scenario 1

Noble Academy administration is preparing for on campus school operations to resume in the fall of 2020. The community will follow specific health precautions which will be in accordance with local, state, and federal requirements. Specific decisions and plans regarding on campus modifications will be finalized over the next several months, however current considerations can be found on page 6 of this re-entry plan.



The standard drop-off and pick-up times will *likely* remain the same.



Bus services to Winston-Salem will *likely* remain the same.



Athletic offerings will be determined by NCHSAA recommendations and requirements.



The Knights Club will *likely* be offered for students in grades 2 - 9.

Preparing for Interruptions

Following the recommendations from our Re-entry Task Force and trends from past pandemics, Noble Academy is preparing for waves of interruption to on campus learning. In the event our local community experiences a spike in COVID-19 cases and an interruption of physical operations occurs, a shift to Online School will happen immediately.

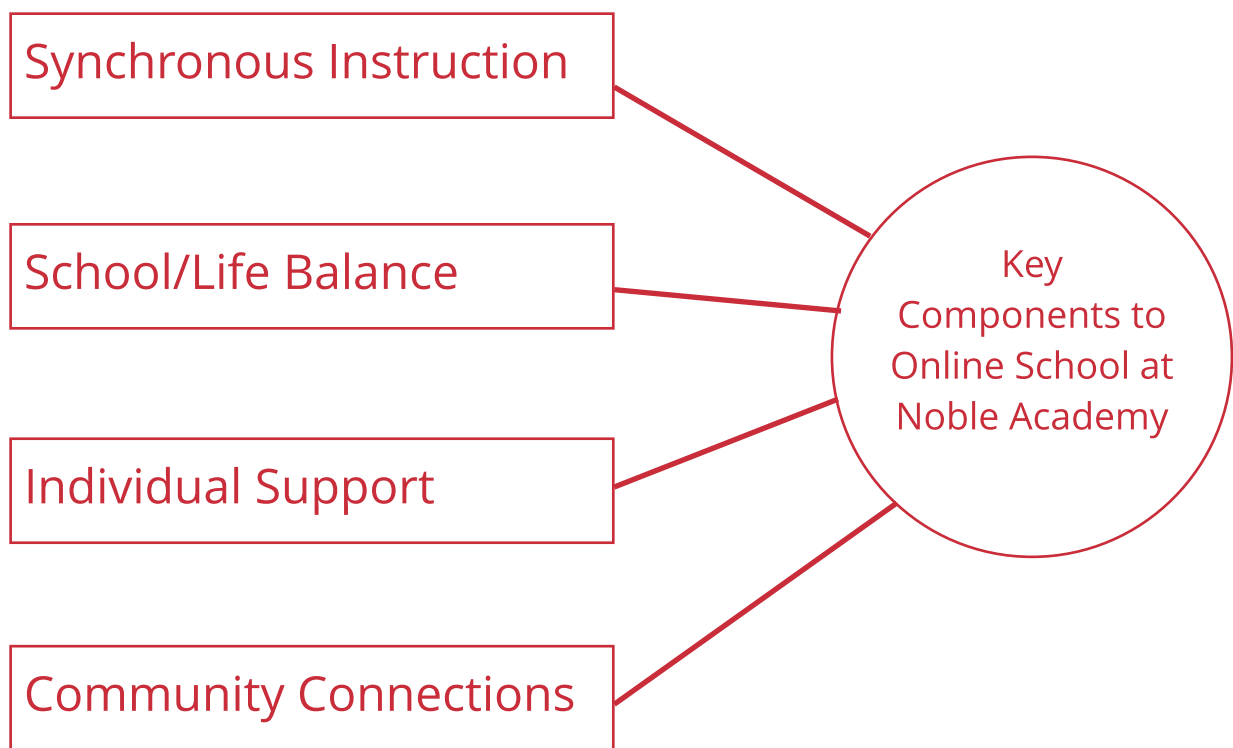


If the physical campus closes and Noble Academy transitions to Online School, families will be extended financial credit towards fees collected for services not rendered during Online School (bus, TKC, lunch).

Scenario 2

ONLINE SCHOOL

Online School does not change our mission of empowering students with learning differences to meet their highest potential. This mission depends on the components of our Noble Academy Way to reach every child where they are and see each student as an individual. In the Online School model we continue to educate the whole child, build confidence, promote life balance, and encourage the pursuit of individual passions. Noble Academy's Online School model blends daily synchronous (live) instruction with independent work (as appropriate) with a schedule intentionally designed to provide school/life balance and mindfulness.



Flexibility and Personalization



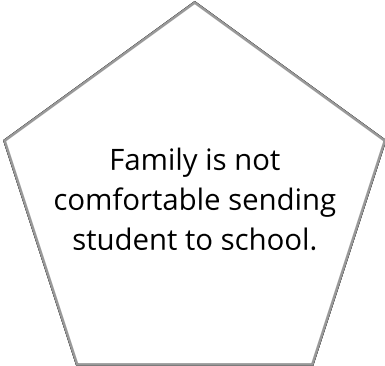
Noble Academy recognizes that the Online School experience will be different for every student depending on their learning needs. Division administrators will work individually with families to determine adjustments in schedules, workloads, and expectations. While many students may excel in and have capacity for electives and specials, some students would benefit from less additional work. This is an example of the personalization Noble Academy can do for students during Online School.

REMOTE ATTENDANCE

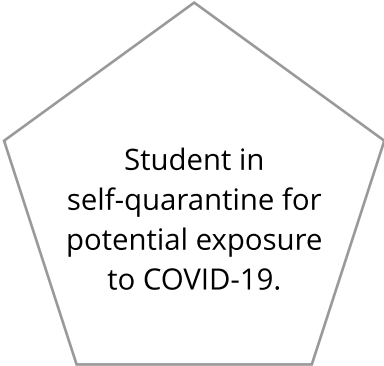
Scenario 3

Students may find themselves in a situation, during the year, where Noble Academy's campus is open, but they are not able to physically attend school. In these situations, Noble Academy teachers will utilize interactive technology to allow the student to participate in the live class in real time. Students will have access to course materials electronically and will benefit from the live instruction, including class discussions.

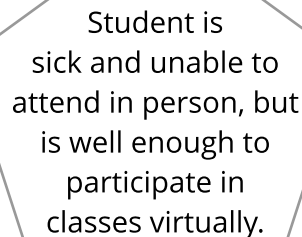
Instances for Remote Attendance



Family is not comfortable sending student to school.



Student in self-quarantine for potential exposure to COVID-19.



Student is sick and unable to attend in person, but is well enough to participate in classes virtually.



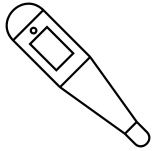
Students will be marked as Present from home. Any day in the Remote Attendance model, will be counted as a day present.



Flexibility and Personalization will also be utilized during Remote Attendance to ensure the most important academic pursuits are prioritized, while assisting students with executive function needs and promoting School/Life Balance.

Physical Campus

While specific decisions and plans will be finalized over the next several months as more information and updated public health guidelines are issued, strategies are being developed in the following areas including, but not limited to:



Requirements for temperatures to be taken for students, faculty, staff, visitors and vendors



The use of masks during classes and in public gathering spaces



Institution of capacity limits to allow for social distancing in classrooms and public spaces such as the Cafe, auditorium, etc.



Sanitizing and cleaning processes



Modification of programs and events in compliance with limits on gathering sizes and social distancing measures



Changes to campus access for visitors and parents



Continued use of online and virtual platforms in conjunction with in-person services (a "hybrid approach") to keep in-person contact at safer levels in the areas of academic instruction, student activities, and more



**NOBLE
ACADEMY**
BUILDING GREAT FUTURES